

SHOP WITH OFFICE - AVAILABLE FOR LEASE



1500 S. BLACKSTONE AVENUE

TULARE, CA

AVAILABLE FOR LEASE

PROPERTY INFORMATION

Building Size:	3,000± SF
Lease Rate:	\$3,000 (\$1.00 PSF/Monthly)
Lease Type:	Modified Gross
Tenancy:	Single
Property Type:	Industrial
Roll Up Ground Doors:	3 2 (8 X 10) 1 (12 X 14)
Clear Height:	16'
Deep Bays:	38'
Year Built:	1981
Zoning:	M2 (Heavy Manufacturing)
APN:	182-020-030-000 (Tulare County)

CALL KYLE
559-696-2842

For information, please contact:

KYLE RHINEBECK, SIOR
Senior Vice President
callkyle@callkyle.com
CA RE Lic. #00928751

ZEEB
COMMERCIAL REAL ESTATE

Independently Owned and Operated | Corporate License #00020875 | zeebre.com
OFFICE: 3447 S. Demaree St., Visalia, CA 93277, t 559-625-2128

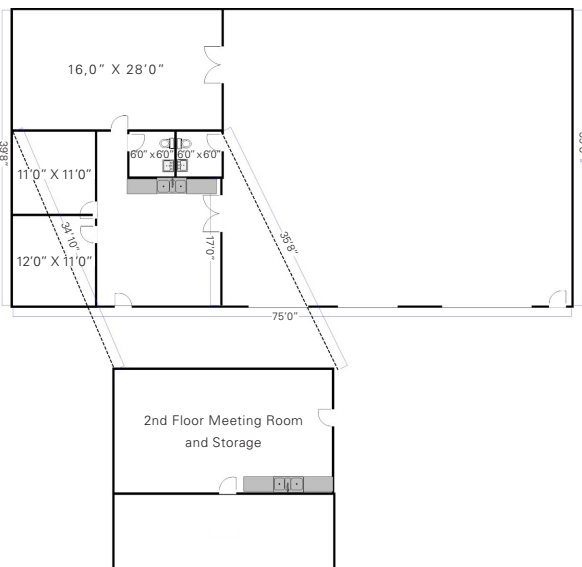
The distributor of this communication is performing acts for which a real estate license is required. The information contained herein has been obtained from sources deemed reliable but has not been verified and no guarantee, warranty or representation, either express or implied, is made with respect to such information. Terms of sale or lease and availability are subject to change or withdrawal without notice.



LOCATION DESCRIPTION

Located west of Highway 99 on the NEC of Blackstone Avenue and Batavia Court in Tulare.

FLOOR PLAN



CALL KYLE
559-696-2842

For information, please contact:

KYLE RHINEBECK, SIOR
Senior Vice President
callkyle@callkyle.com
CA RE Lic. #00928751

HIGHLIGHTS

- Great Location Just Off Highway 99
- Very Clean Office
- 3 Bay Shop Combo, With 3 Roll Up Ground Doors
- Second floor has potential for large break room, meeting room, or extra storage
- 12 Onsite Parking Stalls